

Sensor head MAM option - Specification Sheet

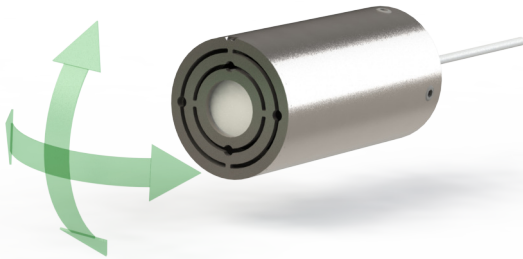


Table 1. Summary of specifications of the MAM option.

Property	Value
Outer diameter	12.7 mm (1/2")
Material	Titanium
Alignment range (tip/tilt)	$>\pm 4^\circ$
Alignment resolution	0.5° per revolution
Stability	50 $\mu\text{rad}/^\circ\text{C}$
Conditions	Ambient, HV
Supported sensor head types	PS-SH-C01
	PS-SH-C03
	PS-SH-F01
	PS-SH-L01

1. INTRODUCTION

The MAM (manual alignment mount) option allows easy integration of a sensor head into an existing setup. The housing can simply be clamped in an appropriate bore hole, for example. Fine adjustment screws are used to manually align the sensor head to the target.

2. STABILITY

The stability of the sensor heads has been verified by aligning a PS-SH-L01 line focusing sensor head to a fixed mirror and repeatedly cycling the environmental temperature by more than $\pm 3\text{ K}$. By comparing the signal decrease with the total angular tolerance of the sensor head in its non-focused axis yields a stability of 50 $\mu\text{rad}/^\circ\text{C}$.

3. ORDER CODE

Simply add the "-MAM" label to the sensor head order codes.

Sales partner / Contacts

Germany

SmarAct GmbH

Schuette-Lanz-Strasse 9
26135 Oldenburg
Germany

T: +49 441 - 800 879 0
Email: info-de@smaract.com
www.smaract.com

France

SmarAct GmbH

Schuette-Lanz-Strasse 9
26135 Oldenburg
Germany

T: +49 441 - 800 879 956
Email: info-fr@smaract.com
www.smaract.com

USA

SmarAct Inc.

2140 Shattuck Ave. Suite 302
Berkeley, CA 94704
United States of America

T: +1 415 - 766 9006
Email: info-us@smaract.com
www.smaract.com

China

Dynasense Photonics

6 Taiping Street
Xi Cheng District,
Beijing, China

T: +86 10 - 835 038 53
Email: info@dyna-sense.com
www.dyna-sense.com

Natsu Precision Tech

Room 515, Floor 5, Building 7,
No.18 East Qinghe Anning
Zhuang Road,
Haidian District
Beijing, China

T: +86 18 - 616 715 058
Email: chenye@nano-stage.com
www.nano-stage.com

Shanghai Kingway Optech Co.Ltd

Room 1212, T1 Building
Zhonggeng Global Creative Center
Lane 166, Yuhong Road
Minhang District
Shanghai, China

Tel: +86 21 - 548 469 66
Email: sales@kingway-optech.com
www.kingway-optech.com

Japan

Physix Technology Inc.

Ichikawa-Business-Plaza
4-2-5 Minami-yawata,
Ichikawa-shi
272-0023 Chiba
Japan

T/F: +81 47 - 370 86 00
Email: info-jp@smaract.com
www.physix-tech.com

South Korea

SEUM Tronics

1109, 1, Gasan digital 1-ro
Geumcheon-gu
Seoul, 08594,
Korea

T: +82 2 - 868 10 02
Email: info-kr@smaract.com
www.seumtronics.com

Israel

Trico Israel Ltd.

P.O.Box 6172
46150 Herzeliya
Israel

T: +972 9 - 950 60 74
Email: info-il@smaract.com
www.trico.co.il