

The C04 is the standard sensor head type for the PICO-SCALE Interferometer. Due to its collimated output beam, the compact form factor and the various customization options, it is appropriate for most common applications.

OPTICAL SPECIFICATIONS

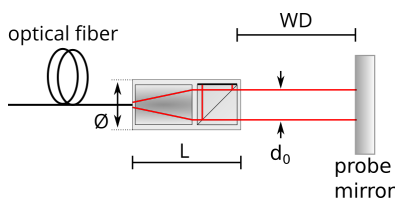


Figure 1. Schematic drawing of the sensor head C04.

Each sensor head (see Figure 1) is based on two main components: the lens system, collimating the fiber output beam and the beam splitter, which splits the beam into a reference and probe beam. The reference beam is reflected off an internal reference mirror, coated to one side of the beam splitter cube. The probe beam exits the head and is reflected off the target surface in order to track its relative displacement. The front surface of the beam splitter marks the absolute zero position of every PICO-SCALE measurement as here the probe and reference beam are of equal length.

Beam properties

The probe beam has its waist approximately at the front surface of the beam splitter cube, where the beam has a diameter of about 350 μm . In the far field of the beam its diameter increases with a slope of 2.8 mrad, as shown in Figure 2.

Working distances (WD)

The PICO-SCALE sensor head C04 is specified for working distances between 13 and 500 mm. However, due to the inevitable divergence of the laser beam, the optical power collected by the sensor head decreases, if the working distance increases. In Figure 3, the optical signal is shown for varying working distances. For the

Table 1. Summary of optical properties (typical).

Property	Value
Wavelength	1555 nm
Optical output power	150 μW
Laser output mode	single mode
Beam waist diameter (d_0)	350 μm
Waist position	0
Divergence half-angle	2.8 mrad
Working distance	13-500 mm
Beam geometry	circular
Angular working range*	$\pm 0.075^\circ$

*See section .

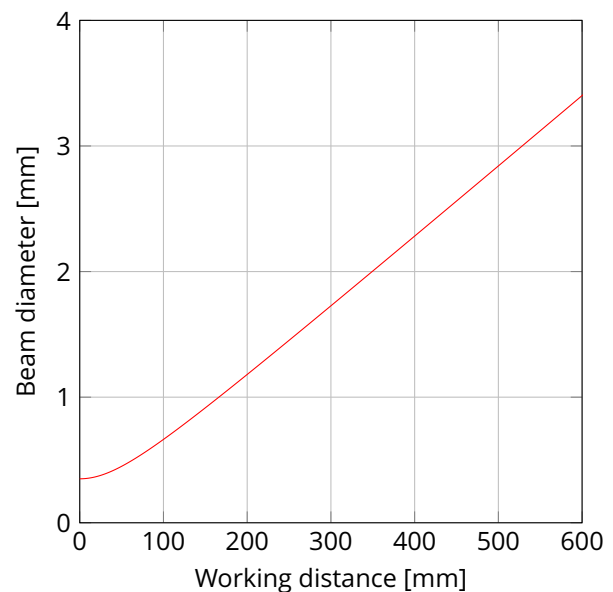


Figure 2. Beam diameter as function of working distance.

C04, we recommend working distances below 250 mm. Larger working distances are possible, but the signal-to-noise performance will be limited.

Angular working range

The optimal performance of the sensor head is obtained, if the maximum light intensity returns from the target mirror. This is ensured for normal incidence of the probe beam on the mirror. However, the sensor head still collects some light, if the target mirror is tilted with respect to the beam. Figure 4 shows the angular working range of multiple C04 sensor heads.

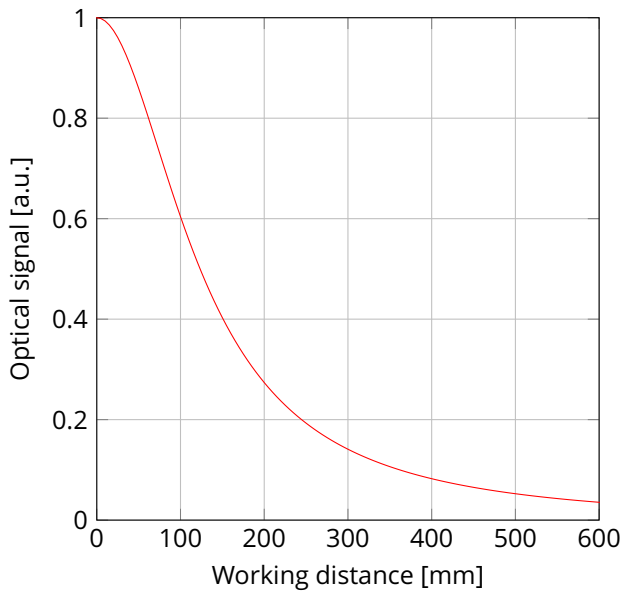


Figure 3. Optical signal recovered by the sensor head as function of the working distance.

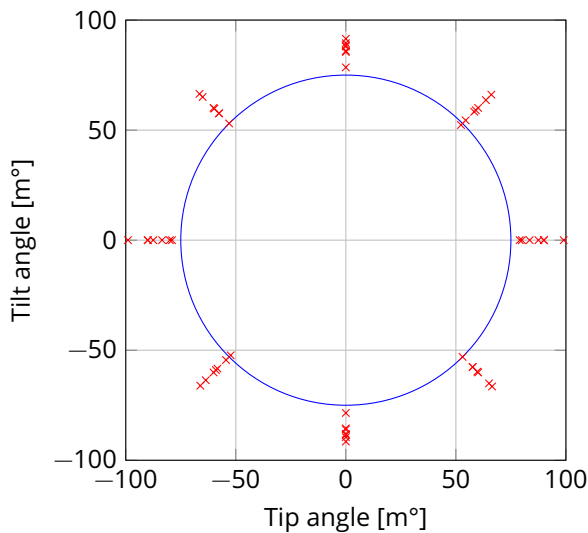


Figure 4. Angular working range for 7 sensor heads C04 and a target mirror at a distance of 50 mm. The typical minimum angular working range was determined to ± 0.075 degrees.

For the measurement, a target mirror with an average reflectance $> 97.5\%$ for 1550 nm was placed at a working distance of about 50 mm. The sensor heads were aligned and the automated optimization routine was performed, generating optimum signal quality. Then, the dynamic corrections were deactivated while the target mirror was tipped/tilted and the angle at which the PICO SCALE recognized a "beam interrupt" event¹ was recorded. The blue circle indicates the minimum angular working range in all directions, for standard beam interrupt settings.

¹The PICO SCALE controller provides an event notification system and can alert the user in case the signal quality drops below a specified level.

Options

The C04 sensor heads can be equipped with different beam splitters, allowing to customize the optical properties.

Reference mirror at the front face

In a standard C04 sensor head the reference mirror is coated to one of the side faces of the beam splitter. In setups with specific space constraints it can be advantageous to use a beam splitter with the reference mirror coated to its front face, so that the probe beam exits the head perpendicularly.

No reference mirror - differential measurements

Generally, the reference mirror is directly coated to the beam splitter. However, sensor heads are available without any reference mirror. In this case, the user has to provide an additional mirror to be used as reference. This setup allows to measure relative displacements of two targets.

Beam splitter ratio

In standard sensor heads the laser beam is equally split into the reference and the probe arm. When targets with low reflectivity are used, the signal-to-noise ratio can be increased, if the beam splitter guides more power into the probe beam. Therefore, the beam splitter ratio can be customized.

HOUSING

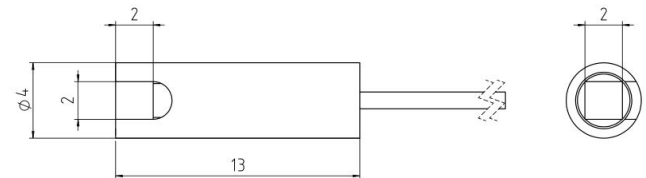


Figure 5. CAD drawing of the sensor head C04 (General tolerances: ISO 2768-fH).

A standard sensor head C04 has a titanium housing with a diameter of 4 ± 0.05 mm and 13 mm length, as shown in Figure 5. Its weight is approximately 0.5 g. Furthermore, the sensor heads can be delivered without protective housing (-NO). In this case, a 2.8 mm diameter glass sleeve can be used for mounting and its weight reduces down to approximately 0.2 g.

OPTICAL FIBER

The sensor head C04 is interfaced with the PICO SCALE controller via an optical fiber with an FC/APC connector (8° angled end face to minimize back-reflections). By default, the sensor heads are equipped with a 900 μm fiber, which is 1.5 m long.

Both the fiber length and the actual fiber type can be customized.

ORDER CODE

The order code of the sensor heads is built as follows:

PS-SH-C04-B-C-D-E-F-G

The placeholders can be replaced by the respective option code. These codes are given in the table below. If you do not specify an option, the default value is used.

Category	Shortcut	Description
-B	No entry/default	Operation in ambient conditions
-C Reference mirror position	No entry/default	Reference mirror on side surface of beam splitter; probe beam exits at front of sensor head
	-FR	Reference mirror on front surface of beam splitter; probe beam exits perpendicular
	-ER	External reference mirror; two probe beams exit sensor head for differential measurements
-D Beam splitter ratio	No entry/default	Beam splitter has 50% transmission
-E Fiber length	No entry/default	1.5 m fiber length
	-3.0	3.0 m fiber length. Other lengths on request.
-F Fiber type	No entry/default	900 μ m jacket recommended minimal bending radius: 20 mm (ambient/HV); 30 mm (UHV/Cryo)
-G Housing option	No entry/default	Titanium housing (\varnothing = 4 mm, L = 13 mm, m = 0.5 g)
	-NO	No housing; glass sleeve only (\varnothing 2.8 mm, m = 0.2 g)

Contact

Germany

SmarAct Metrology GmbH & Co. KG

Rohdenweg 4
D-26135 Oldenburg
Germany

T: +49 (0) 441 - 800879-0
Email: metrology@smaract.com
www.smaract.com

France

SmarAct GmbH

Schuetten-Lanz-Strasse 9
26135 Oldenburg
Germany

T: +49 441 - 800 879 956
Email: info-fr@smaract.com
www.smaract.com

USA

SmarAct Inc.

2140 Shattuck Ave. Suite 302
Berkeley, CA 94704
United States of America

T: +1 415 - 766 9006
Email: info-us@smaract.com
www.smaract.com

China

Dynasense Photonics

6 Taiping Street
Xi Cheng District,
Beijing, China

T: +86 10 - 835 038 53
Email: info@dyna-sense.com
www.dyna-sense.com

Natsu Precision Tech

Room 515, Floor 5, Building 7,
No.18 East Qinghe Anning
Zhuang Road,
Haidian District
Beijing, China

T: +86 18 - 616 715 058
Email: chenye@nano-stage.com
www.nano-stage.com

Shanghai Kingway Optech Co.Ltd

Room 1212, T1 Building
Zhonggong Global Creative Center
Lane 166, Yuhong Road
Minhang District
Shanghai, China

Tel: +86 21 - 548 469 66
Email: sales@kingway-optech.com
www.kingway-optech.com

Japan

Physix Technology Inc.

Ichikawa-Business-Plaza
4-2-5 Minami-yawata,
Ichikawa-shi
272-0023 Chiba
Japan

T/F: +81 47 - 370 86 00
Email: info-jp@smaract.com
www.physix-tech.com

South Korea

SEUM Tronics

1109, 1, Gasan digital 1-ro
Geumcheon-gu
Seoul, 08594,
Korea

T: +82 2 - 868 10 02
Email: info-kr@smaract.com
www.seumtronics.com

Israel

Optics & Motion Ltd.

P.O.Box 6172
46150 Herzeliya
Israel

T: +972 9 - 950 60 74
Email: info-il@smaract.com
www.opticsmotion.com

SmarAct Metrology GmbH & Co. KG develops sophisticated equipment to serve high accuracy positioning and metrology applications in research and industry within fields such as optics, semiconductors and life sciences. Our broad product portfolio – from miniaturized interferometers and optical encoders for displacement measurements to powerful electrical nanoprobers for the characterization of smallest semiconductor technology nodes – is completed by turnkey scanning microscopes which can be used in vacuum, cryogenic or other harsh environments.

We maintain the complete production in house for a high level of customization so that we can always provide you the optimal individual or OEM solution. We also offer feasibility studies, measurement services and comprehensive support to accompany you along your projects.

Headquarters

SmarAct GmbH

Schuetze-Lanz-Strasse 9
26135 Oldenburg
Germany

T: +49 441 - 800 879 0
Email: info-de@smaract.com
www.smaract.com

USA

SmarAct Inc.

2140 Shattuck Ave. Suite 302
Berkeley, CA 94704
United States of America

T: +1 415 - 766 9006
Email: info-us@smaract.com
www.smaract.com