
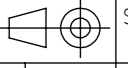
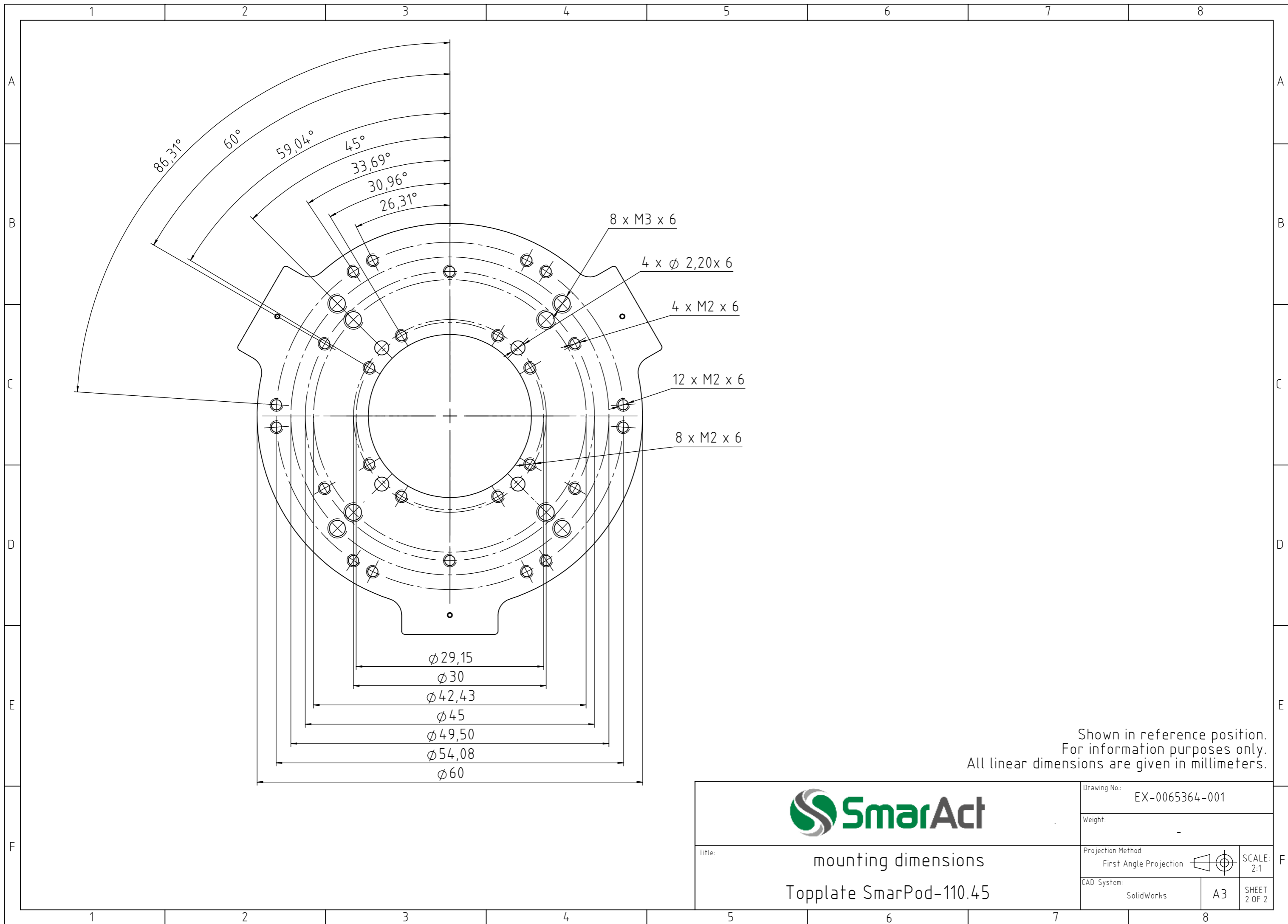


Shown in reference position.
For information purposes only.
All linear dimensions are given in millimeters.


	Drawing No.: EX-0065364-001	
	Weight: 400 g	
Title: mounting dimensions SmarPod-110.45	Projection Method: First Angle Projection 	SCALE: 1:1
	CAD-System: SolidWorks	A3 SHEET 1 OF 2



Title: mounting dimensions
Topplate SmarPod-110.45

Drawing No.: EX-0065364-001

Weight: -

Projection Method: First Angle Projection  SCALE: 2:1

CAD-System: SolidWorks A3 SHEET 2 OF 2