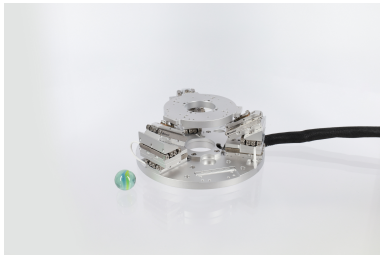


SMARPOD 110.45

The **SMARPOD 110.45** can position payloads of up to 5 N and offers a travel of 20 mm in X- and Y-direction. The base plate of the **SMARPOD 110.45** can be equipped with mounting posts for tools, components or sensors, converting the system to a key tool for micro assembly and any other application involving precise alignment.



Values for rotational travel are given for a pivot point at the surface of the top plate.

The overall dimensions of the complete system may be larger for different poses. For more information, see the CAD model in the download area.

The repeatability is measured about 20 mm above the top plate of each system, over the full travel range and for a single degree of freedom at a time. Values may be better for shorter travel ranges.

The middle size **SMARPOD 110.45** has a base plate diameter of 110 mm offering a travel of 20 mm in X- and Y-direction.

	Mechanical
Travel [mm]	20 (X); 20 (Y); 11 (Z)
Travel [°]	23 (Θx); 26 (Θy); 38 (Θz)
Max. Normal Force [N]	5
Max. Horizontal Force [N]	2.5
Dimensions Base Plate [mm]	Ø 110
Height of Platform above Ground [mm]	45
Weight [g]	410
	Closed-Loop
Sensor Types	SC
Smallest Increment [nm]	1
Smallest Increment [μ°]	3
Uni-Directional Repeatability MCS2 [nm]	± 50
	Options
Vacuum Options	HV (1E-6 mbar); UHV (1E-11 mbar)

Non-Magnetic Option	Yes (-NM)
---------------------	-----------